

### Directions

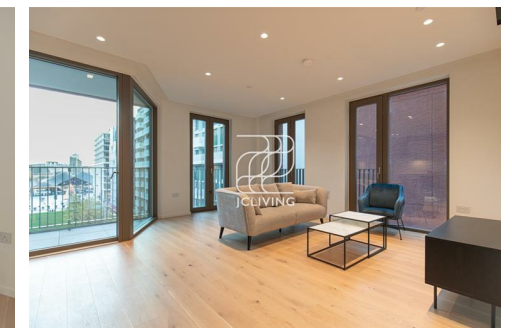
### Viewings

Viewings by arrangement only. Call 02033696888 to make an appointment.

### EPC Rating

B

Energy Efficiency Rating		Current	Potential
Very energy efficient - lower running costs			
(92 plus) A			
(81-91) B		83	83
(69-80) C			
(55-68) D			
(39-54) E			
(21-38) F			
(1-20) G			
Not energy efficient - higher running costs			
England & Wales		EU Directive 2002/91/EC	



SY10 Flat E4.2, Cadence Court 4 Lewis Cubitt Square, London, N1C 4DY

£4,500 Per Month

- 24 hour concierge
- Award winning architectural design
- Residents gym
- Council Tax band F
- 901 square ft
- Residents lounge
- Close to Coals Drop Yard

# Cadence Court 4 Lewis Cubitt Square, London N1C 4DY

\*\*\* Please quote reference JC23121369 when contacting the office \*\*\*\*

Nestled in the vibrant area of Kings Cross, this exquisite apartment offers a perfect blend of modern living and architectural elegance. Spanning an impressive 901 square feet, the property features two well-appointed bedrooms and two stylish bathrooms. The apartment boasts a spacious reception room that invites natural light, creating a warm and welcoming atmosphere.

Designed by the award winning Alison Brooks Architects, Cadence Court provides a serene outdoor space for residents to unwind and enjoy the beauty of their surroundings. This includes the stunning courtyard and tranquil terrace, which provides an amazing view of the city.

Residents will benefit from a 24-hour concierge service, ensuring peace of mind and assistance at any hour. Amenities include a residents' lounge and a fitness space, promoting a sense of community and well-being among neighbours.

Situated in close proximity to Coal Drops Yard, this location offers an array of shops, restaurants, and cultural experiences, making it a lively and desirable place to live.

Available from 14/06/2026



Council Tax Band: F

